

Road Map for 'Sharing & Learning'



Context

- *Local Regional Team*
- *Inter-Regional Perspective*
- *Stewardship Perspective*
- *Pin Your Location*
- *About the Guide*

Strategies & Tools

Interactive Segment

What Next

Comox Valley local governments are partners in the Georgia Basin Inter-Regional Educational Initiative (IREI)...



*Metro Vancouver, Capital Region,
Cowichan Region, Nanaimo Region
and Comox Valley*

- Launched in 2012
- The Partnership is the secretariat
- In April 2015, the five Regional Boards recommitted through 2017 to work as a team
- ***By 2017***, a program goal is that all local governments would *understand* how to achieve 'Sustainable Watershed Systems, through Asset Management'



The climate in BC is changing:

wetter, warmer winters; longer, drier summers

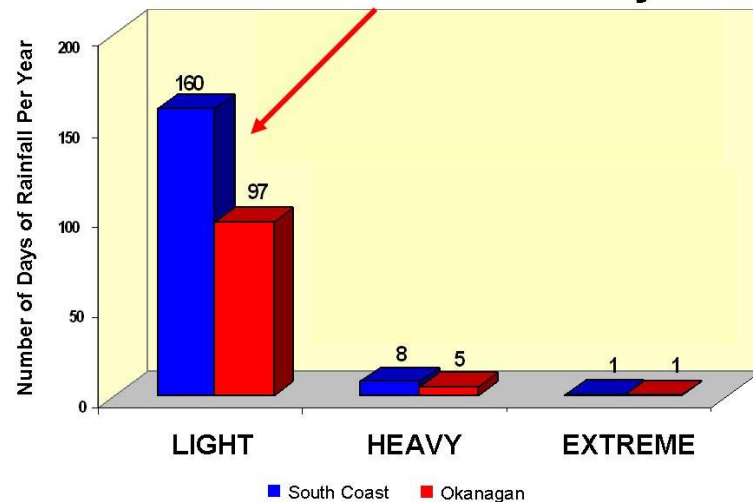
We can sustain water supply in dry weather
and limit drainage impacts in wet weather.

Alignment of mandates, roles and responsibilities is
necessary to successfully **‘Design with Nature’** and
‘restore Water Balance integrity’ in urban regions

In 2000, we went back to basics and developed the concept of a Rainfall Spectrum.

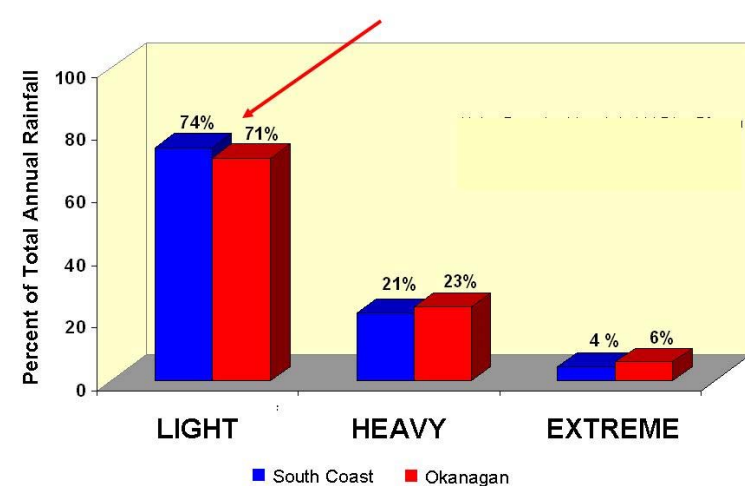
We demonstrated the achievability of “rainfall capture”. This helped overcome fear and doubt.

The ‘Light Shower’ Category Accounts for Most of the Rainfall Days



Days

Light Showers Account for Most of the Annual Rainfall Volume



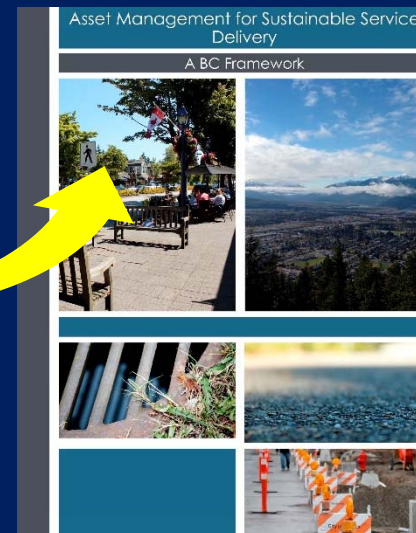
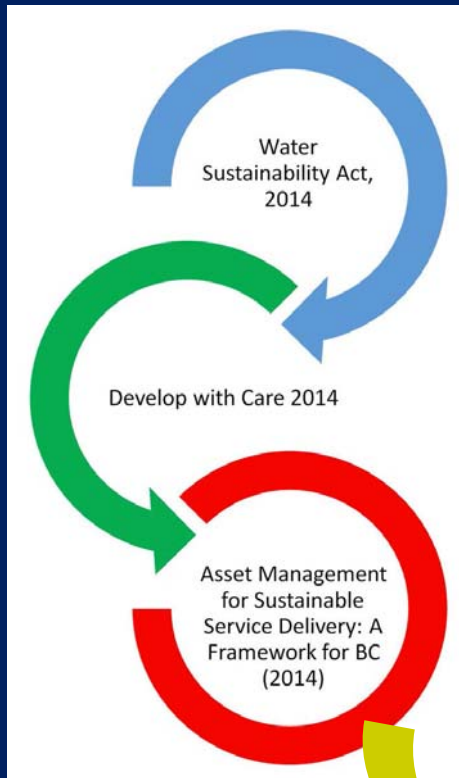
Volume

KEY MESSAGE -

What Happens on the Land Matters:

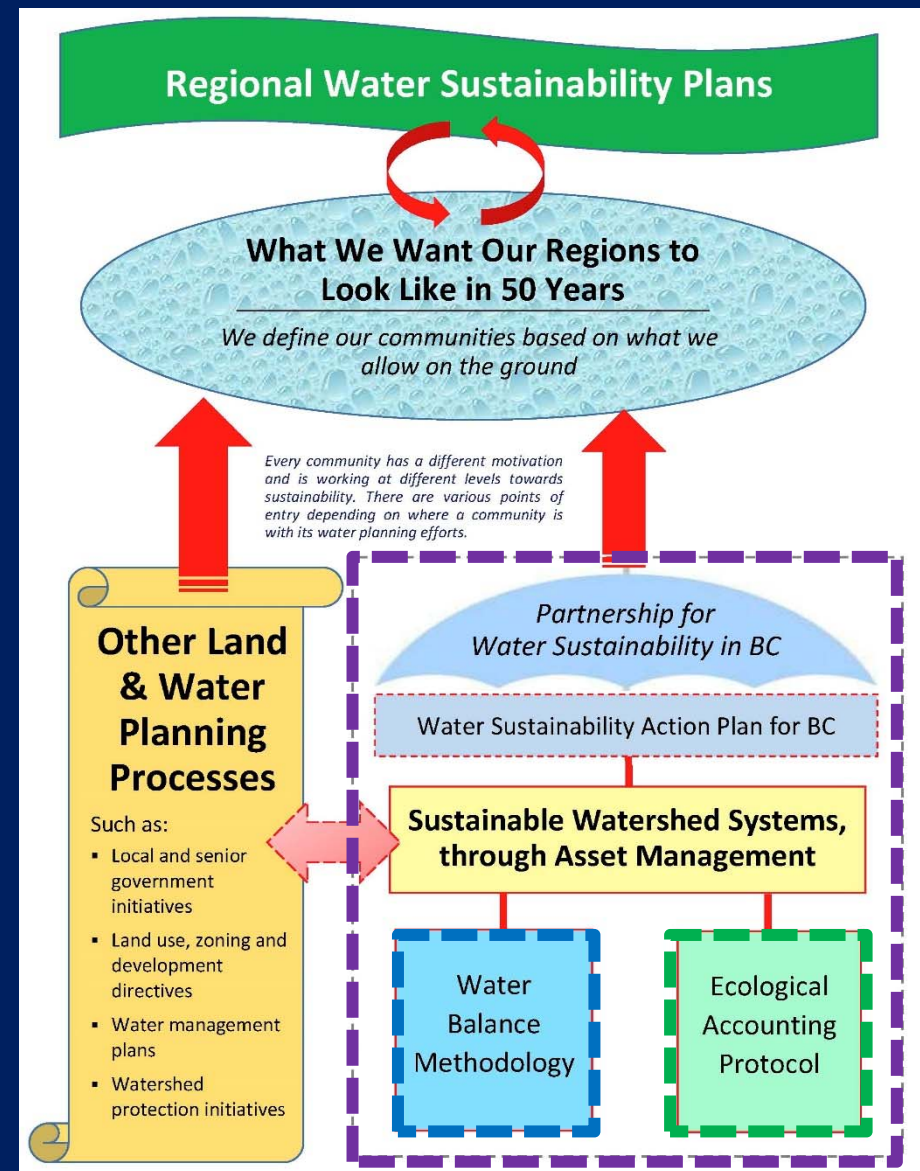
Of the three drivers for action, the **BC Framework** is the lynch-pin because....

...it provides local government with the financial incentive for integration of watershed systems thinking into asset management



INTENT -

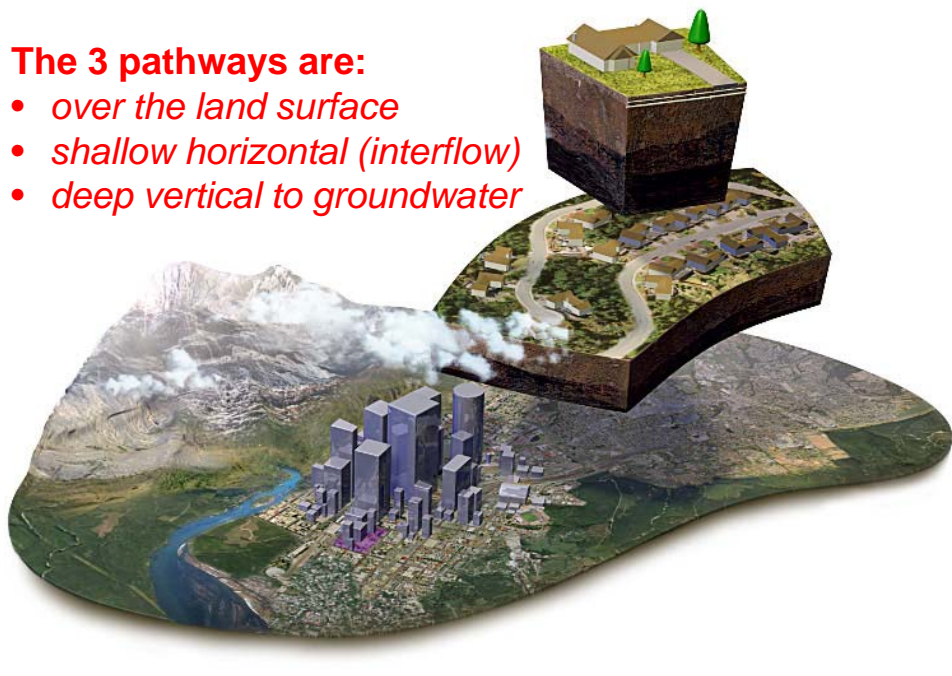
Over the next two years, the IREI program will add to the BC Framework by showing how to integrate *watershed systems thinking*, including adaptation to a changing climate, into asset management



INTRODUCING THE NEW PARADIGM – “Watersheds as Infrastructure Assets”

The 3 pathways are:

- *over the land surface*
- *shallow horizontal (interflow)*
- *deep vertical to groundwater*

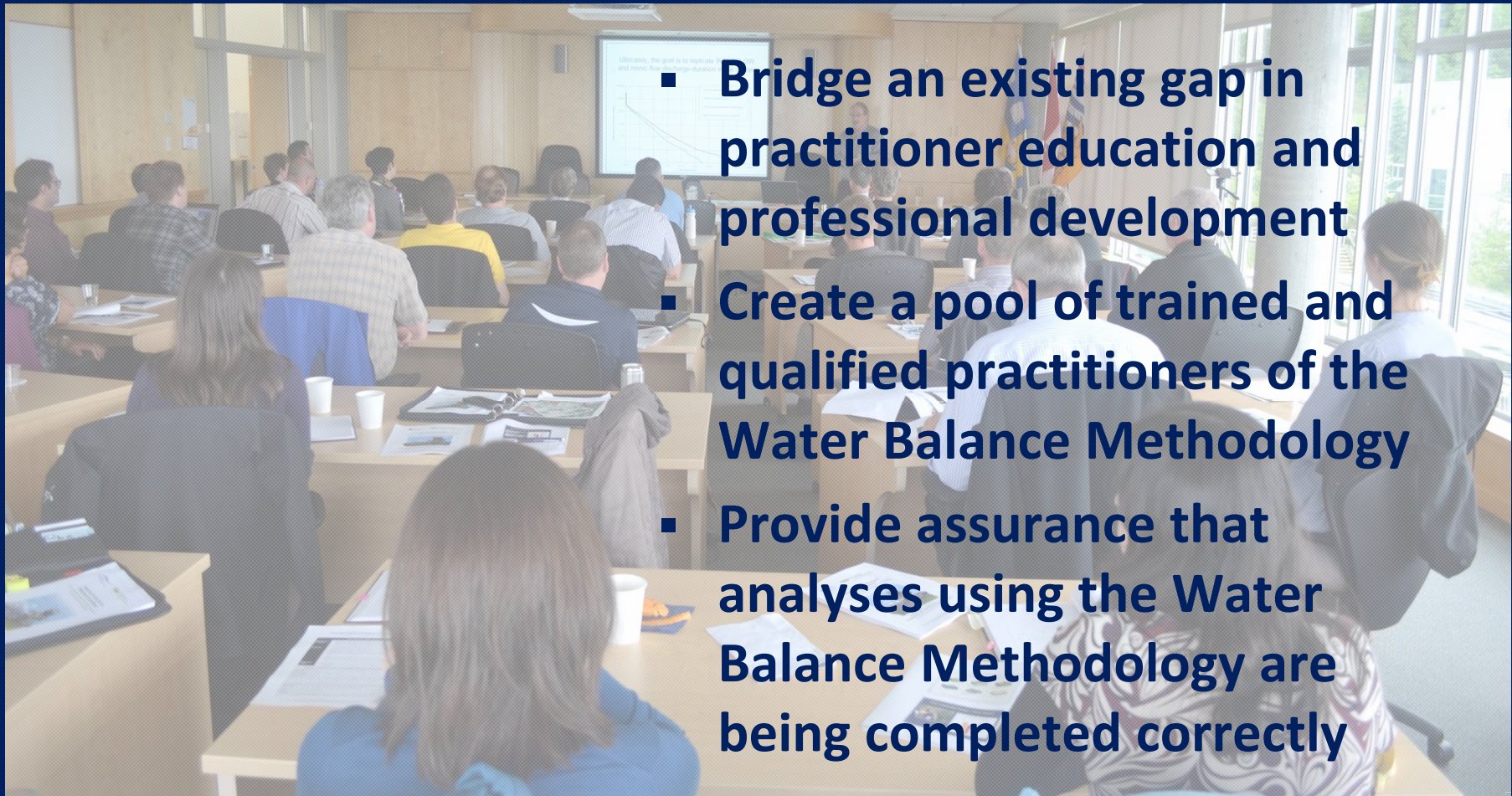


A watershed is an **integrated system**.

The **three pathways** by which rainfall reaches streams are ‘infrastructure assets’.

The three pathways provide ‘**water balance services**’.

*Looking ahead, a future IREI deliverable is
“Water Balance Methodology Accreditation” to.....*



- Bridge an existing gap in practitioner education and professional development
- Create a pool of trained and qualified practitioners of the Water Balance Methodology
- Provide assurance that analyses using the Water Balance Methodology are being completed correctly