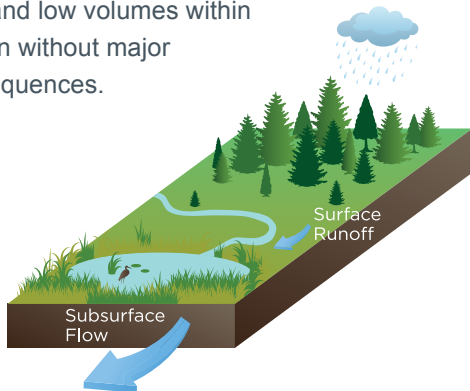


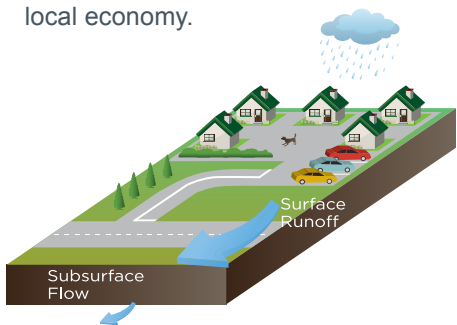


How we turn rainwater into stormwater

When rainwater falls on natural, undeveloped areas it supports the important functions performed by our streams and wetlands, and soaks slowly into the ground to replenish our important groundwater resources. This balance of run-off has developed over time, and our watersheds can accommodate its high and low volumes within reason without major consequences.



When we alter the watershed by removing some of the natural areas and putting in roads and homes, we change the balance of how much runs off, and how quickly it runs off. Rainwater falling on hard, impervious surfaces like roofs, driveways, and packed lawns stays on the surface and turns into concentrated, fast-moving stormwater that erodes watercourses, carries pollutants and is costly to our environment and our local economy.



Find out more at cvrld.waterbalance-express.ca

New tool helps your property act like a watershed

The CVRD's new Water Balance Tool offers simple rainwater management solutions to help your property manage rainwater effectively. See inside this brochure for more information.

Implementing some of these rainwater solutions has some big payoff for you and the region: your property is better able to capture rainfall and control runoff and flooding, your lawn and garden look beautiful and is naturally watered, and the watershed you live in is replenished.

CVRD's Water Balance Tool:
www.cvrld.waterbalance-express.ca

Find out more about rainwater management at www.waterbucket.ca

Questions? Contact us at

CVRD's Environmental Initiatives Division at environment@cvrd.bc.ca or
North Cowichan planning@northcowichan.ca
City Of Duncan michelle@duncan.ca
Town of Ladysmith dwebber@ladysmith.ca
Town of Lake Cowichan general@lakecowichan.ca

The CVRD's Water Balance Tool has been developed with The Partnership for Water Sustainability and other local governments throughout BC



Act like a watershed and protect stream health

Landowner tools to:

Capture rainfall

Avoid stormwater

Protect your property from erosion

Restore your watershed





Our watersheds offer free services

Our watersheds provide us with many vital services including freshwater for drinking and the environment, and protection against drought and floods — all at no cost. But we can't take these services for granted: watersheds can only function properly if we all do our part to keep our watersheds healthy and balanced.

How you can help manage water

The key to rainwater management is to: **connect your property's hard surfaces** (e.g. roofs and driveways that shed water and cause fast-moving runoff) **with well-designed absorbent or porous surfaces** (e.g. lawns and gardens with deep loam soils or rain gardens that collect **and slowly release** the water that falls on them).

The first step is to make use of the region's new Water Balance Tool that lets you determine if your property is managing rainwater properly (aka acting like a watershed), and explore solutions if it isn't. When every property is able to manage its own rainwater during an **average rainfall**, we will have made some major strides forward in our restoring watersheds and stream health.

There will always be larger rainfall events and storms that will flow into creeks, riparian areas and wetlands (natural green infrastructure) or stormwater pipes and ditches (expensive human-made grey infrastructure). These should only be relied on for the really big events..

Using the Water Balance Tool

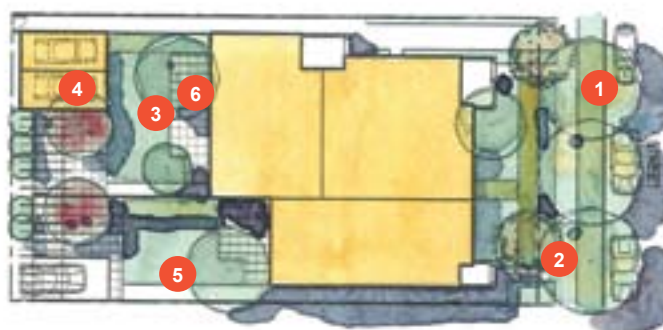
Find out how to help your property act like a watershed by using the CVRD's free, online Water Balance Tool: cvrd.waterbalance-express.ca. It's as easy as 1-2-3.

Step 1. Select your watershed and set up a user account. This step includes some basic information about your watershed.

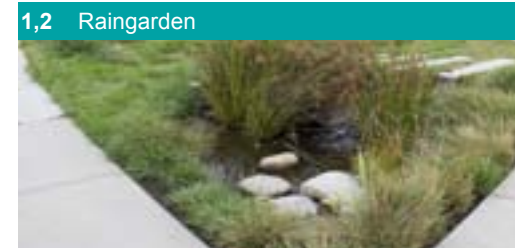
Step 2. Create a project, or two or three. A project is simply an exploration of different options for your property; you can create as many projects as you like.

Step 3. Drag and drop the elements of your property (house, driveway, lawn, garden) down into your project space to find out how much rainwater run-off your property is generating, and then select options for how to "slow, sink and spread" rainwater so it can mimic its part in the watershed.

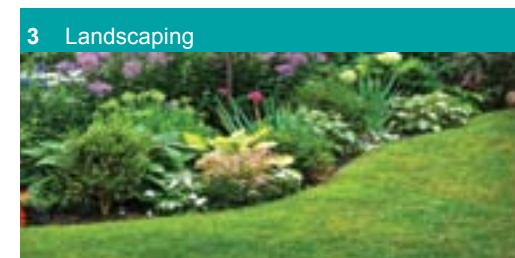
Last, print off a copy for your records or to show your planning department how your property can manage its rainwater effectively.



Some ideas to manage rainwater..



1,2 Rain garden
A **rain garden** is a low landscaped area that collects water – like a ditch. It is often made up of two layers – a top layer of soil that acts like a sponge, and a base layer that quickly absorbs water.(e.g. drain rock, sand) and helps it drain.



3 Landscaping
Basic **landscaping features** such as a lawn or flower garden acts like a sponge – soaking up, storing and then slowly releasing rainfall. Soil type and soil depth plays a huge role in how well this 'sponge' works!



4, 5, 6 Porous Driveways & Walkways
Using **porous (aka pervious) paving materials** for patios, walkways or driveways allows rainwater to slowly seep into the ground, instead of running off the surface. Examples include permeable pavers, gravel, porous asphalt and concrete.

see our hand out on ways landscaping can be used at your local planning department