



Inter-Regional Collaboration for Watershed Sustainability

*Collaboration Will Help Everyone More
Easily Deliver on Regulatory Requirements*

Progress Report to Metro Vancouver Utilities Committee

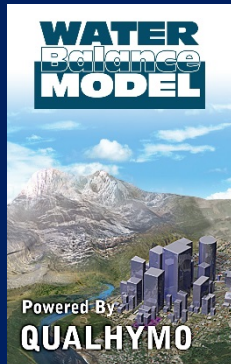
November 13, 2014

From the Watershed to the Site:

Progress Report on Two Collaborative Initiatives



Georgia Basin Inter-Regional Education Initiative



Water Balance Model Express for Landowners

*Why we all need to care
about Watershed Health.....*

By 'designing with nature',
redevelopment creates the
opportunity to restore
Watershed Health over time

Another million people will
call Metro home by 2041.
The issue for politicians:
how best to house them. »
A6-7



BECAUSE:

1. The Inter-Regional Educational Initiative (IREI) helps municipalities better deliver on regulatory compliance related to Rainwater Management and Watershed Health
2. In 2015, the Partnership will co-apply for a capacity-building grant from the *Gas Tax Agreement Strategic Priority Fund* to implement the next phase of inter-regional collaboration under the IREI

THEREFORE, *the Partnership for Water Sustainability asks that:*

1. Metro Vancouver endorse continued participation by the region and members in the IREI
2. Metro Vancouver support-in-principle a grant application in 2015 by the Partnership to fund the IREI through 2017

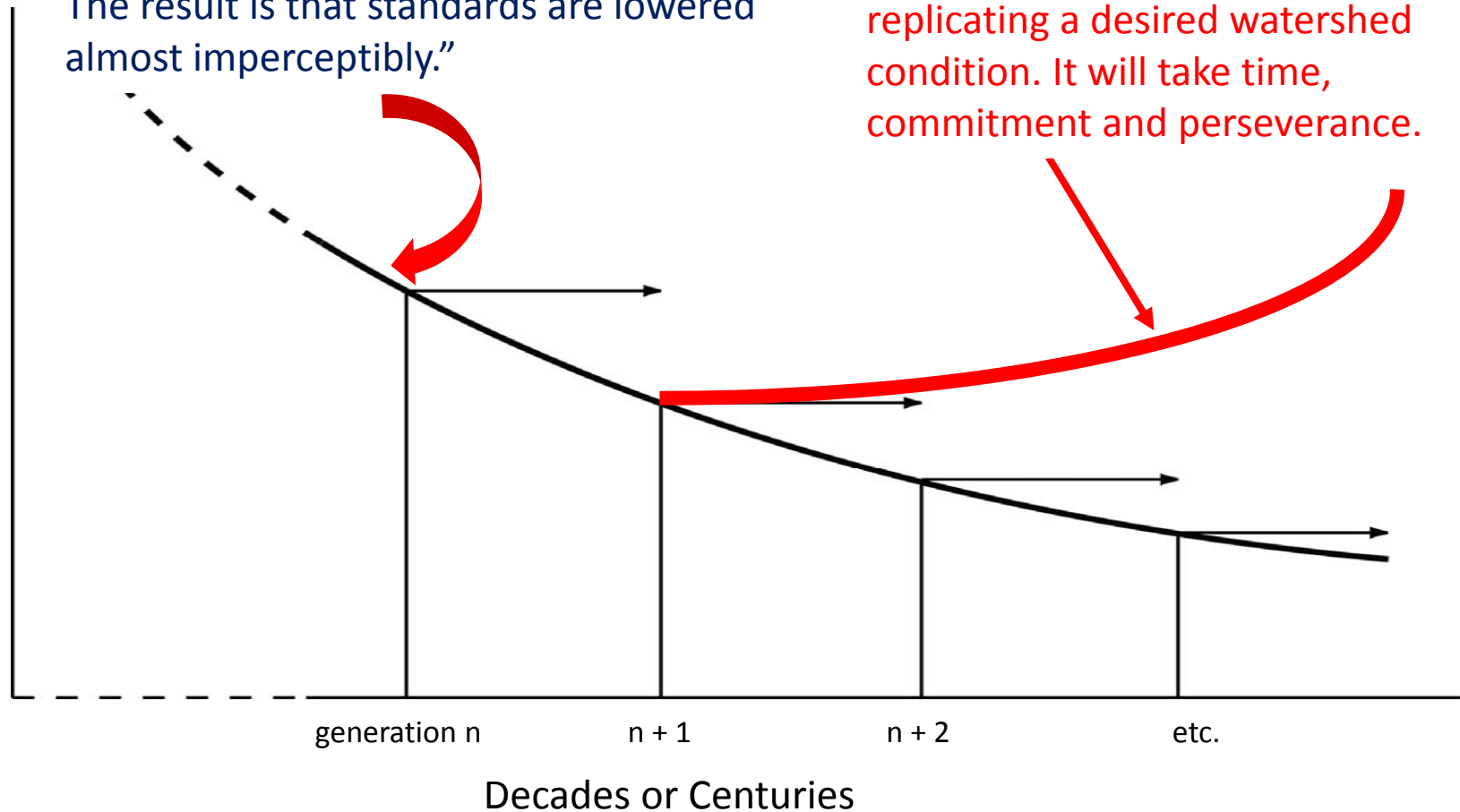
In 1995, Dr. Daniel Pauly coined the phrase
“Shifting Baseline Syndrome”



“With each new generation, the expectation of various ecological conditions shifts. The result is that standards are lowered almost imperceptibly.”

We can shift the baseline by replicating a desired watershed condition. It will take time, commitment and perseverance.

Some Good Thing = Driver for Action
(Aquatic Habitat, Salmon, Clean Water or...)



Five geographic 'regions' are sharing and cross-fertilizing tools, resources, information and expertise



- 5 Comox Valley
 - 4 Nanaimo Region
 - 3 Cowichan Valley
 - 2 Capital Region
 - 1 Metro Vancouver
- Represented by Coquitlam & Surrey*

Local governments learn from each other and progress through sharing of case study experience



By telling the stories of those who are spearheading changes in practice, this helps other local governments eliminate the “disconnect between information and implementation”.

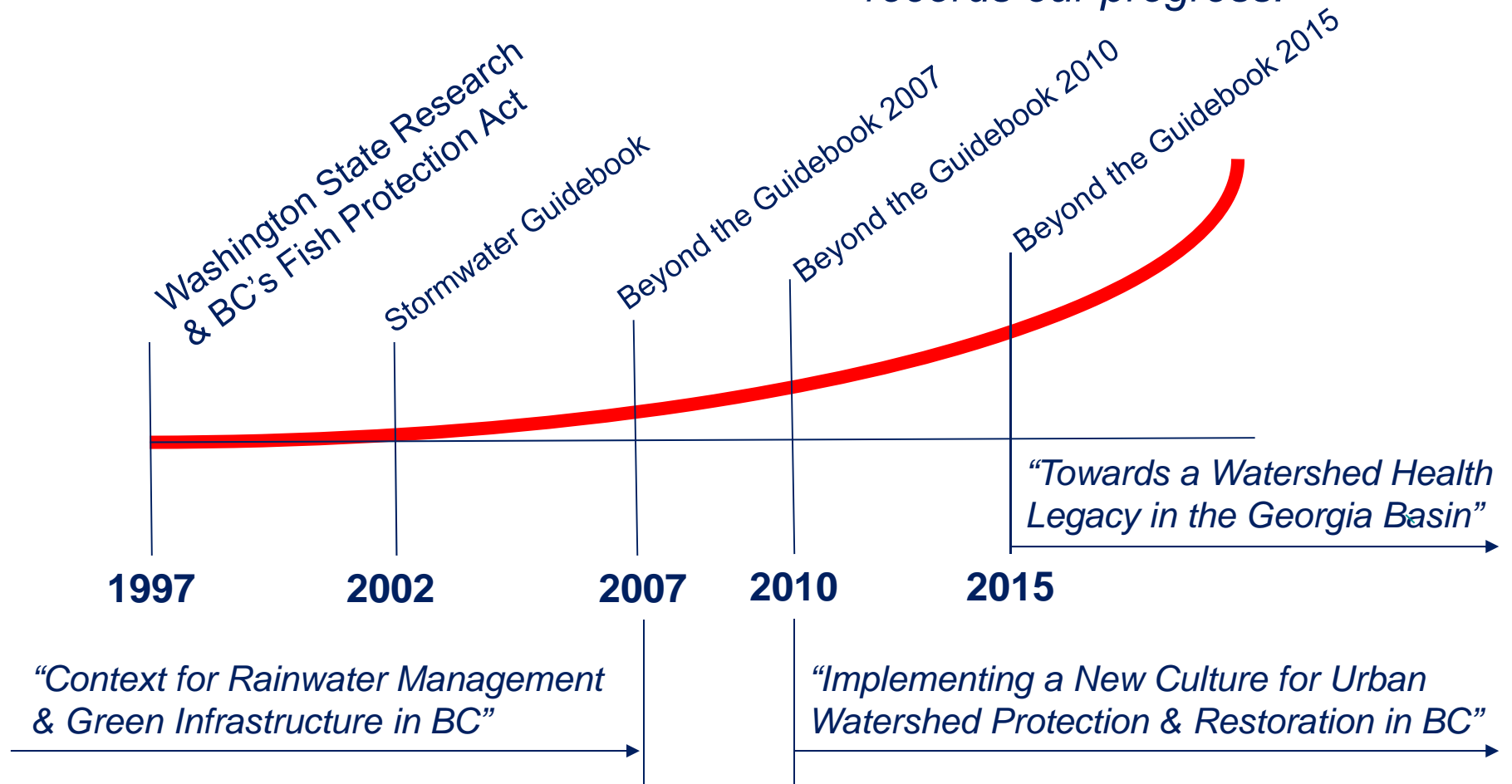
“You are providing the communities of BC with a really valuable service in publicizing and promoting our stories.”



Peter Steblin,
City Manager, City of Coquitlam

Moving along a continuum, knowledge expands and becomes clearer over time.

“Beyond the Guidebook Series” records our progress.



“Beyond the Guidebook 2015” would...

- Inform anyone involved in a watershed health monitoring process
- Be the starting point for sharing, learning and adapting over time
- Be used by local governments to adjust actions, inform community and watershed planning, and create a legacy (i.e. healthy watersheds & streams)



A group of people are seated around a large table covered with a white tablecloth in a meeting room. They appear to be in a collaborative discussion. In the background, there is a whiteboard with some text and a framed picture on the wall. The overall atmosphere is professional and focused.

**“Through sharing & learning,
ensure that where we are going is
indeed the right way”**

Jody Watson
Capital Regional District
June 2013

THEREFORE,

the Partnership for Water Sustainability asks that:

1. Metro Vancouver endorse continued participation by the region and members in the Inter-Regional Education Initiative (IREI)
2. Metro Vancouver support-in-principle a grant application in 2015 by the Partnership to fund the IREI through 2017