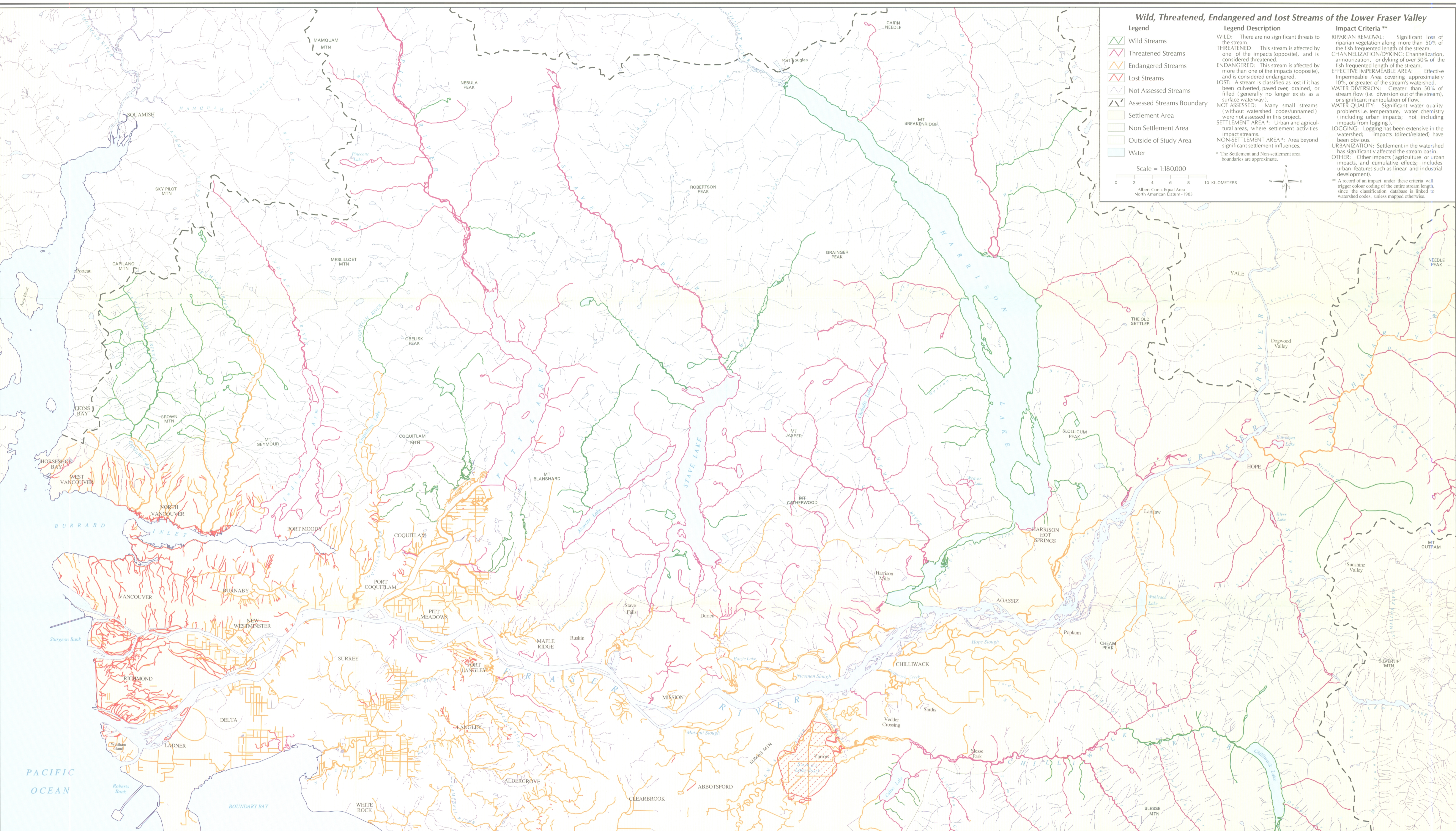


**Wild, Threatened, Endangered and Lost Streams of the Lower Fraser Valley**

Legend	Legend Description	Impact Criteria **
Wild Streams	WILD: There are no significant threats to the stream.	RIPARIAN REMOVAL: Significant loss of riparian vegetation along more than 50% of the fish frequented length of the stream.
Threatened Streams	THREATENED: This stream is affected by one of the impacts (opposite), and is considered threatened.	CHANNELIZATION/DYKING: Channelization, armorization, or dyking of over 50% of the fish frequented length of the stream.
Endangered Streams	ENDANGERED: This stream is affected by more than one of the impacts (opposite), and is considered endangered.	EFFECTIVE IMPERMEABLE AREA: Effective Impermeable Area covering approximately 10%, or greater, of the stream's watershed.
Lost Streams	LOST: A stream is classified as lost if it has been culverted, paved over, drained, or filled (generally no longer exists as a surface waterway).	WATER DIVERSION: Greater than 50% of stream flow (i.e. diversion out of the stream), or significant manipulation of flow.
Not Assessed Streams	NOT ASSESSED: Many small streams (without watershed codes/unnamed) were not assessed in this project.	WATER QUALITY: Significant water quality problems i.e. temperature, water chemistry (including urban impacts; not including impacts from logging).
Assessed Streams Boundary	SETTLEMENT AREA*: Urban and agricultural areas, where settlement activities impact streams.	LOGGING: Logging has been extensive in the watershed; impacts (direct/related) have been obvious.
Settlement Area	NON-SETTLEMENT AREA*: Area beyond significant settlement influences.	URBANIZATION: Settlement in the watershed has significantly affected the stream basin.
Non Settlement Area		OTHER: Other impacts (agriculture or urban impacts, and cumulative effects; includes urban features such as linear and industrial development).
Outside of Study Area		** A record of an impact under these criteria will trigger colour coding of the entire stream length, since the classification database is linked to watershed codes, unless mapped otherwise.
Water		

Scale = 1:180,000  
 0 2 4 6 8 10 KILOMETERS  
 Albers Conic Equal Area  
 North American Datum 1983



**MAP DESCRIPTION:**  
 This map is a general graphic representation of streams and rivers in the Lower Fraser Valley. The map base is the 1:50,000 BC Watershed Atlas. As a result, many small watercourses have not been captured here. This map should be considered a working draft, rather than a final product. Any comments should be addressed to: Habitat and Enhancement Branch, DFO.

**How to use this map:**  
 Stream classifications are the result of interviews, literature and map reviews, and consensus based assessments. This map and database are not designed to be an inventory product, and are not intended for site specific management or decision making purposes. This study and accompanying map provide an overall indication of the condition of streams in the Lower Fraser Valley. More detailed assessment and mapping are necessary in order to develop approaches to addressing the condition of streams in a given area.

**Wild, Threatened, Endangered and Lost Streams of the Lower Fraser Valley**

- Version: June 1998 -

**NOTE:**  
 This map reflects the Assessed Streams Database and its subset, the Settlement Area Streams Database. The databases were built from various sources including FISS, FIAT (DFO), SISS, and various municipal and community sources. Not all streams in the Assessed Streams Database could be represented on this map.  
 DFO FISS Internet site: <<http://habitat.pac.dfo.ca>>

**SOURCE:**  
 This map accompanies the: **Wild, Threatened, Endangered and Lost Streams of the Lower Fraser Valley Summary Report, 1997 (DFO, 1998)**. Any comments should be addressed to: Habitat & Enhancement Branch, DFO, 360-555 W. Hastings Street, Vancouver, B.C. V6B 3G3.

Fraser River Action Plan	Plan d'action du Fraser

Map Produced by Liam Duane