

Presentation to Environmental Services Committee

Capital Regional District

November 2015

***Beyond the Guidebook 2015:
Moving Towards “Sustainable Watershed
Systems, through Asset Management”***

*How to align regional and local actions with the
provincial policy, program and regulatory framework... to protect, restore
the hydrologic integrity of impacted urban watersheds over decades*

Kim A Stephens, M.Eng., P.Eng., Executive Director



the partnership
for water sustainability in bc

INTRODUCING THE NEW PARADIGM – “Watersheds as Infrastructure Assets”

The 3 pathways are:

- *over the land surface*
- *shallow horizontal (interflow)*
- *deep vertical to groundwater*



A watershed is an **integrated system**.

The **three pathways** by which rainfall reaches streams are ‘infrastructure assets’.

The three pathways provide ‘**water balance services**’.

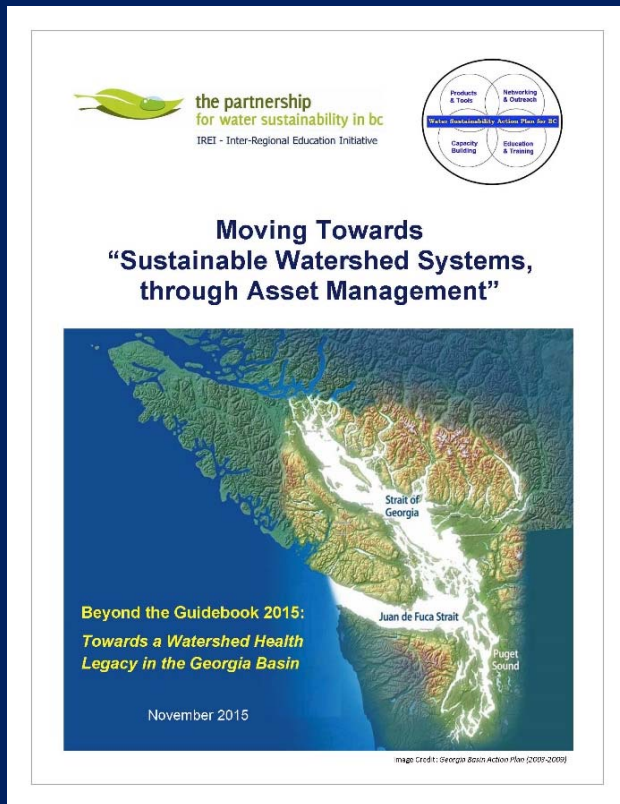
CRD is a partner in the team approach to implementing the Georgia Basin Inter-Regional Educational Initiative (IREI)...



- Launched in 2012 with support from five Regional Districts, including Capital Region
- In April 2015, the five Regional Boards recommitted through 2017 to work as a team
- ***By 2017***, a program goal is that all local governments would ***understand*** how to achieve ‘***Sustainable Watershed Systems, through Asset Management***’

*“Through sharing & learning,
ensure that where we are going
is indeed the right way”*

‘Beyond the Guidebook 2015’ is the third in a series, celebrates work by local government champions, and...



DEFINES three “cascading objectives” for watershed-based action

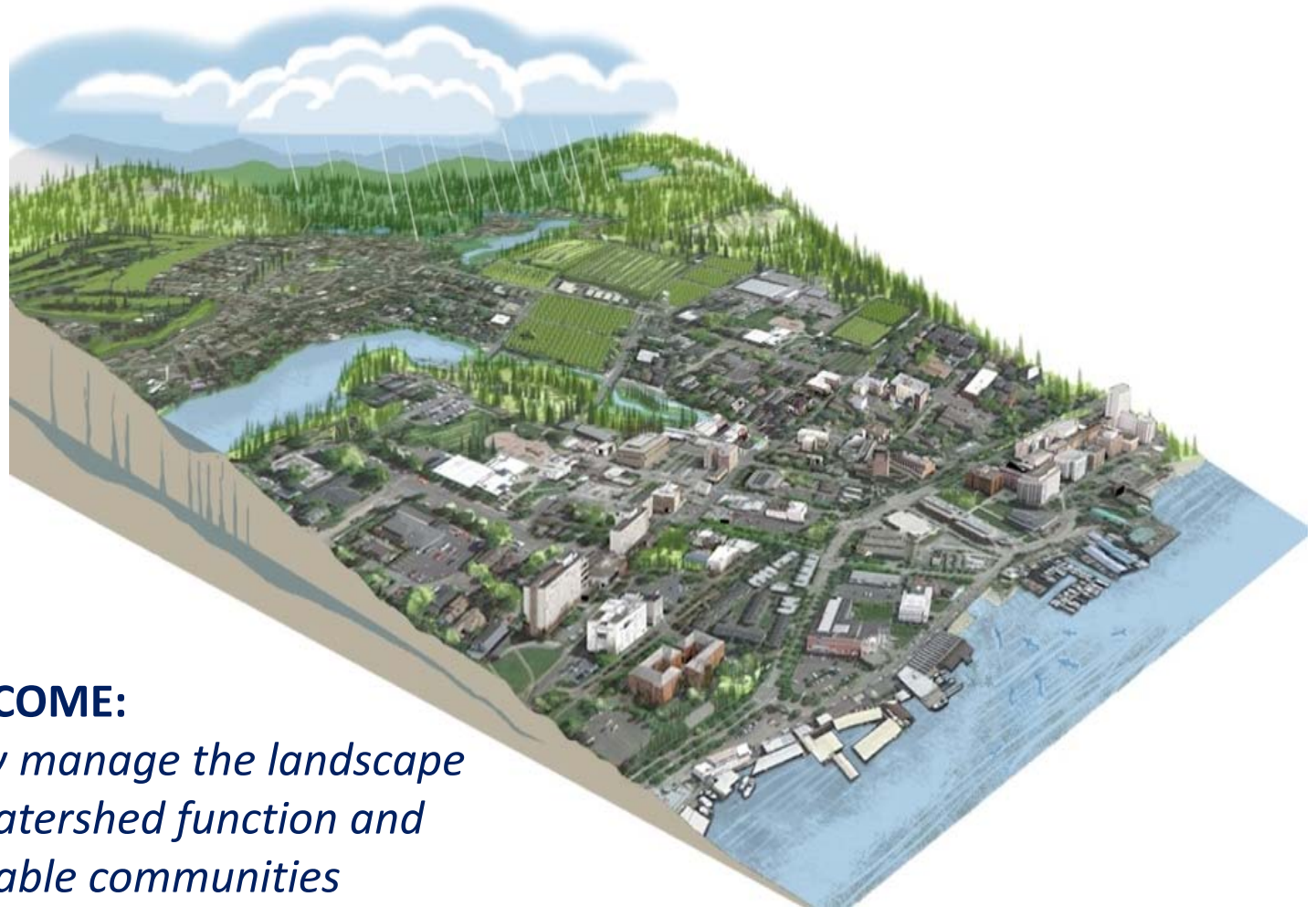
EXPLAINS three provincial “game-changers” that enable action

SHOWCASES five “regional stories” as told in the words of the local champions

PREVIEWS the program for integrating the water balance services provided by soil, water and trees into asset management

Because what happens on the land matters.....

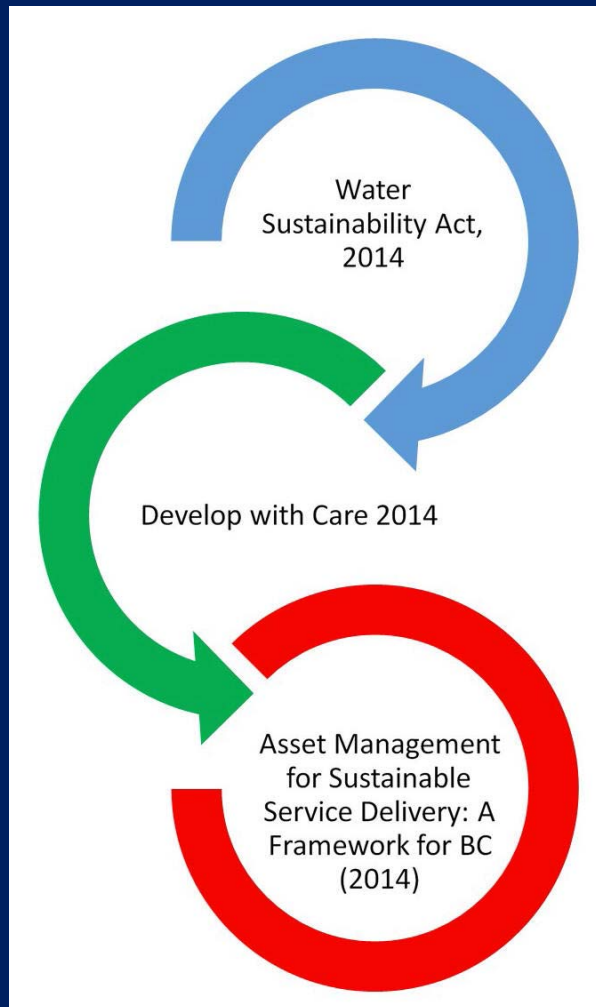
Local governments can foster a new 'Land Ethic' through *Integrated Watershed Management Strategies*



DESIRED OUTCOME:

*collaboratively manage the landscape
to maintain watershed function and
create sustainable communities*

The BC Framework is the lynch-pin for local government action to protect “Water Balance integrity” through asset management:



*“Water-Resilient Communities” -
What happens on the land matters!*

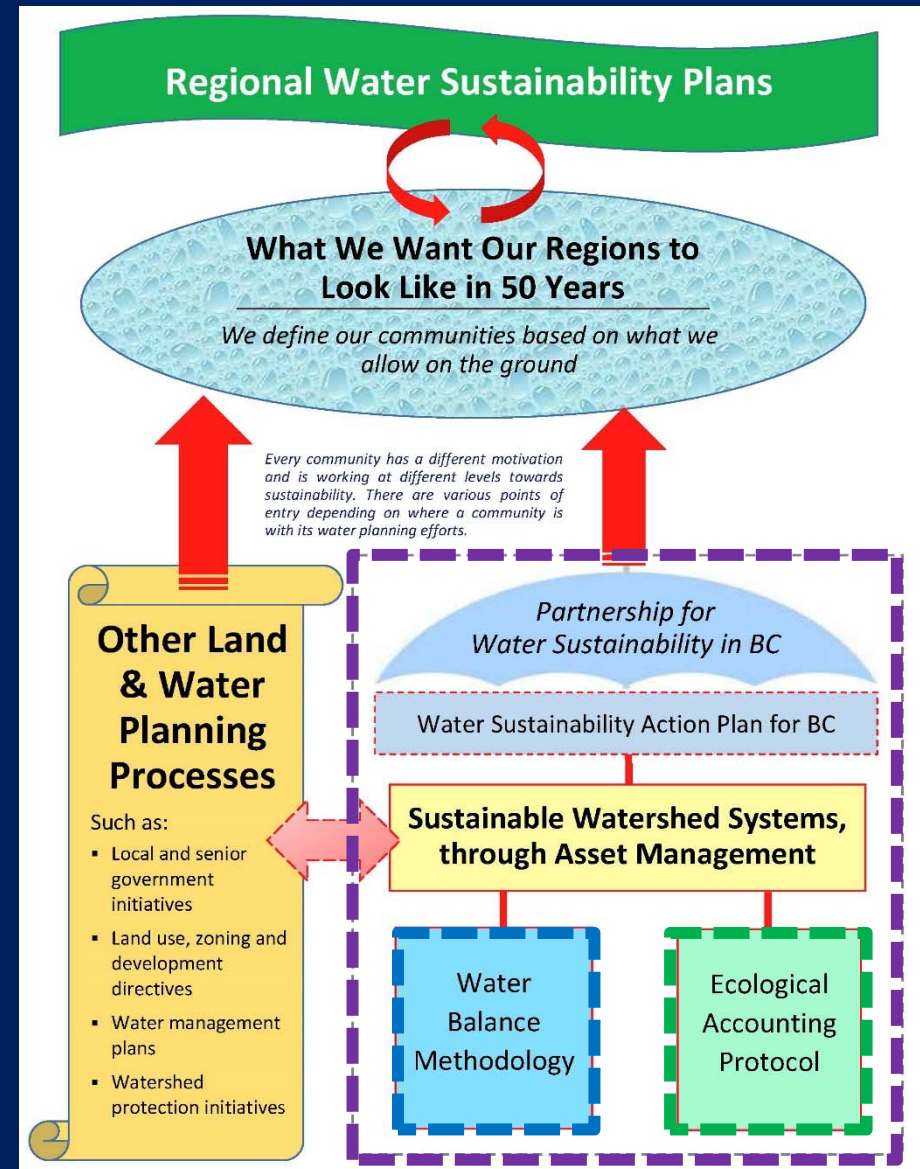
2003 – The Teachable Year

2008 – Call to Action

2014 – Game-Changers Enable Action

Over the next 2 years, inter-regional collaboration will be guided by this mind map. Sustainable Service Delivery makes the link between:

- local government services,
- the infrastructure that supports the delivery of those services, and
- watershed health





The climate in BC is changing:

wetter, warmer winters; longer, drier summers

We can sustain water supply in dry weather
and limit drainage impacts in wet weather.

Alignment of mandates, roles and responsibilities is
necessary to successfully **‘Design with Nature’** and
‘restore Water Balance integrity’ in urban regions

And in conclusion, the Partnership invites you to attend...

***“Feast AND Famine! – Flood AND Drought!
– What Happened to the Balance?”***



“We had no idea until recently how much influence the hydrological cycle has on our day to day lives”

Bob Sandford
Author & Water Champion

Keynote Presenter for
“Feast AND Famine Workshop”
on December 1 in Richmond