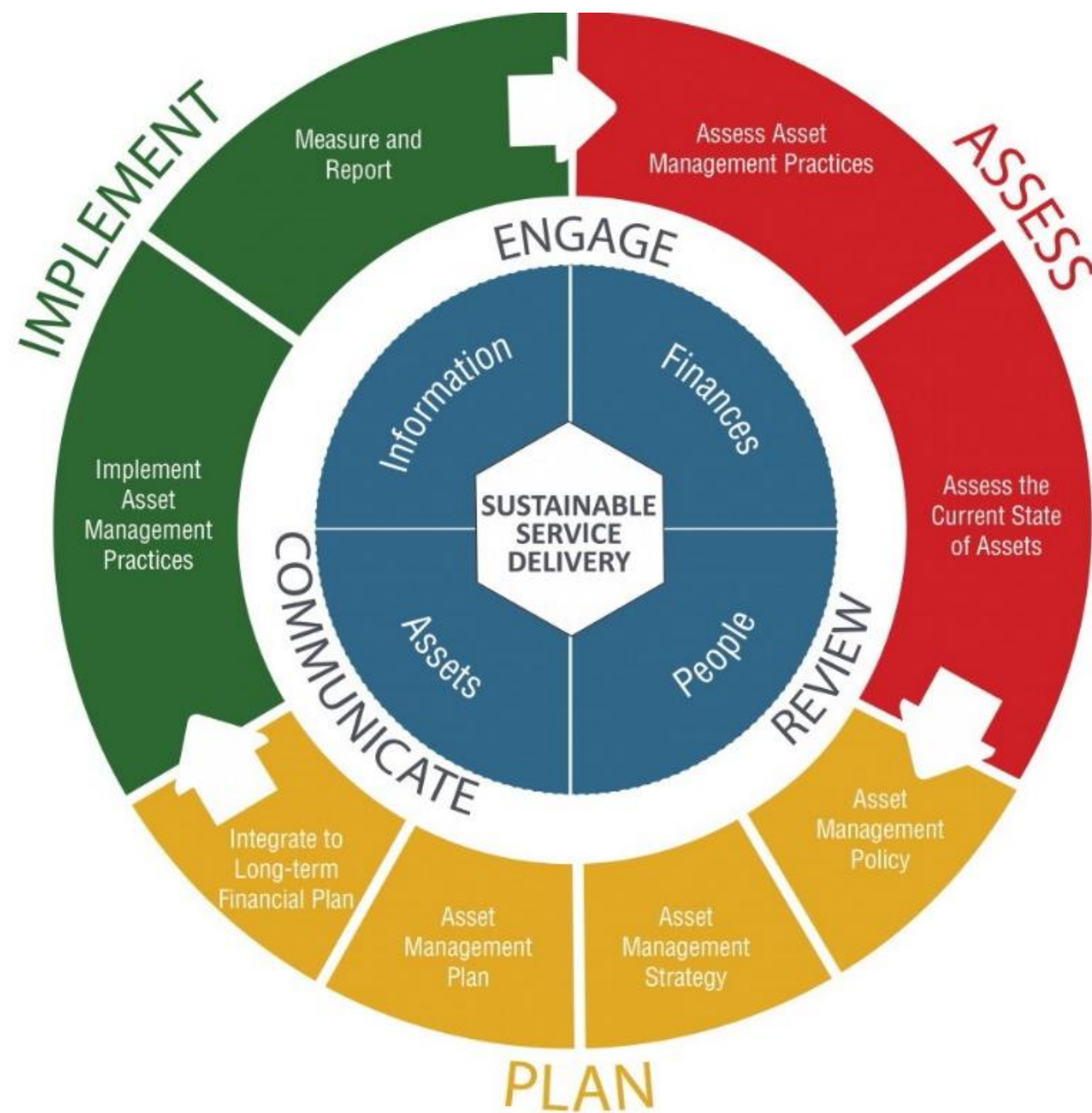


Integration of Stream Systems into “Asset Management for Sustainable Drainage Service Delivery”

‘Continuum of Steps’



Branding logo for
Asset Management for Sustainable Service Delivery:
A BC Framework, released December 2014

WHAT is the issue (Ground Zero):

There is no **Asset Management Strategy**. There is an ‘*unfunded infrastructure (gap, deficit, liability)*’.

SO WHAT can be done (Step One):

Embrace the **BC Framework**. Focus first on constructed assets (pipes & buildings). Implement an *Asset Management Strategy / Program*.

NOW WHAT can we do (Step Two):

Life-cycle approach and **Sustainable Service Delivery** are standard practice for maintenance and management (M&M) of constructed assets.

THEN WHAT will we do (Step Three):

“Twin Pillars” for protection of stream system integrity is standard practice for the drainage service. Apply **EAP, the Ecological Accounting Process**, to quantify *Riparian Deficit* values and establish annual budgets for ongoing stream corridor M&M.

As understanding of the **Local Government Finance Strategy** grows, communities progress incrementally along the Continuum



the partnership
for water sustainability in bc