


Living Water Smart

**Lisa Wright on behalf of
Donna Caddie
BC Ministry of Environment**

A large, dynamic splash of water in shades of blue and white, with many bubbles and droplets, occupies the bottom right and bottom center of the slide.

Today I'll present:

- What is Living Water Smart?
- Why the Plan?
- What are the actions for change with your leadership?




A Water Vision for B.C.

Living Water Smart is the BC government's vision and commitment to ensure our water stays healthy and secure now and into the future.





water makes **life** on earth
possible.

An aerial photograph of a wide, light-colored river flowing through a landscape. The river has several large, forested islands and sandbars. In the background, there are rolling hills and mountains under a clear blue sky. The text is overlaid on the upper half of the image.

British Columbians
care about our 291,000 unique
watersheds...

...our grandparents and parents
have **enjoyed** our water's
riches...



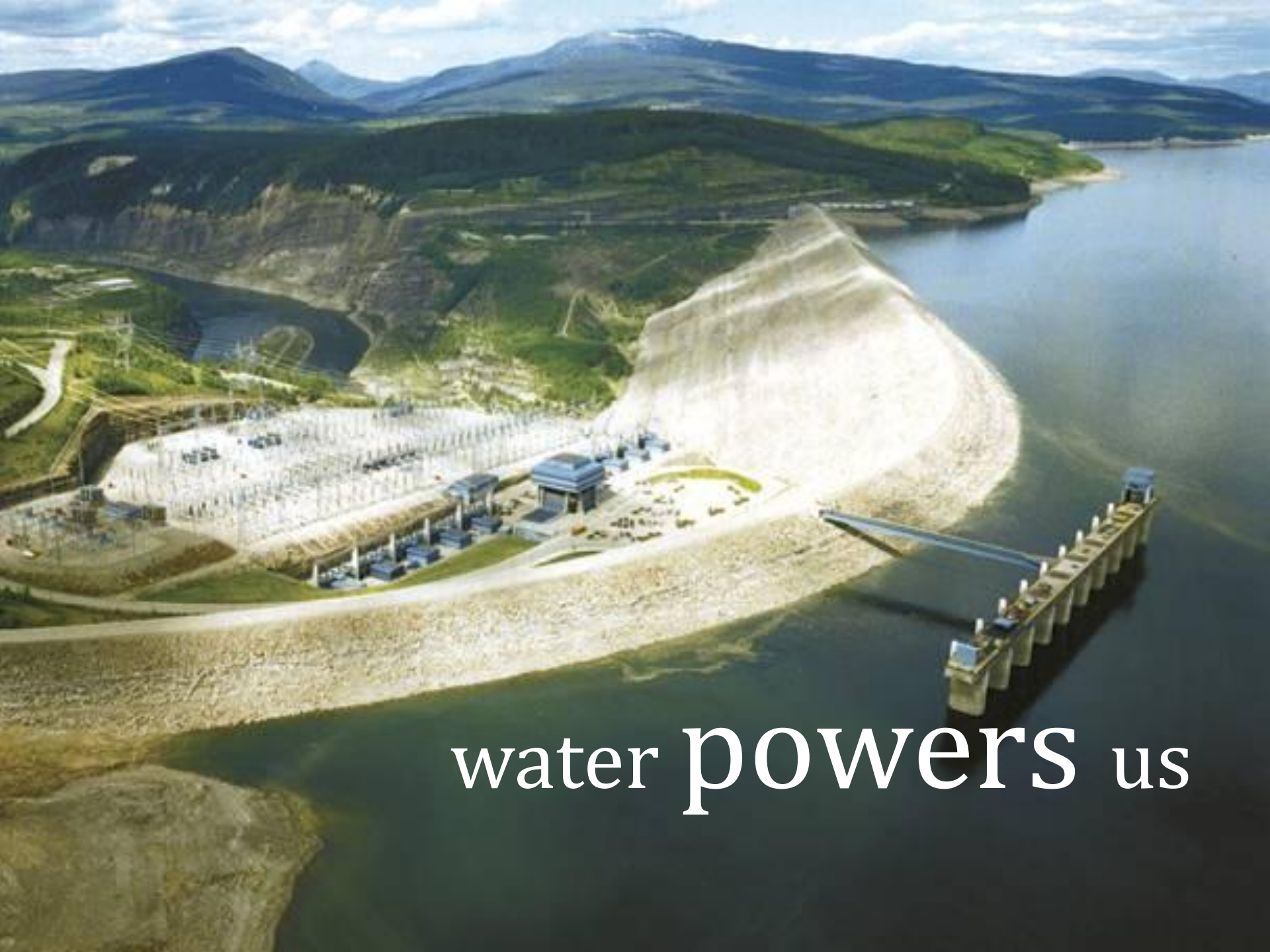
...we want our children and
grandchildren

to **enjoy**
them too.





water **MOVES** us



water powers us

water nourishes
our spirits



water nourishes
our bodies





water is
our playground.

imagine our
watersheds...



A nighttime photograph of a city skyline reflected in water. The skyline is composed of numerous skyscrapers, some of which are illuminated with warm yellow and orange lights. In the foreground, several sailboats are docked at a pier, their masts and rigging visible against the dark sky. The water is calm, creating a clear reflection of the city lights and the boats. The overall atmosphere is serene and modern.

imagine our **businesses...**

imagine our
homes...



A Water Vision for B.C.

Living Water Smart is the BC government's vision and commitment to ensure our water stays healthy and secure now and into the future.

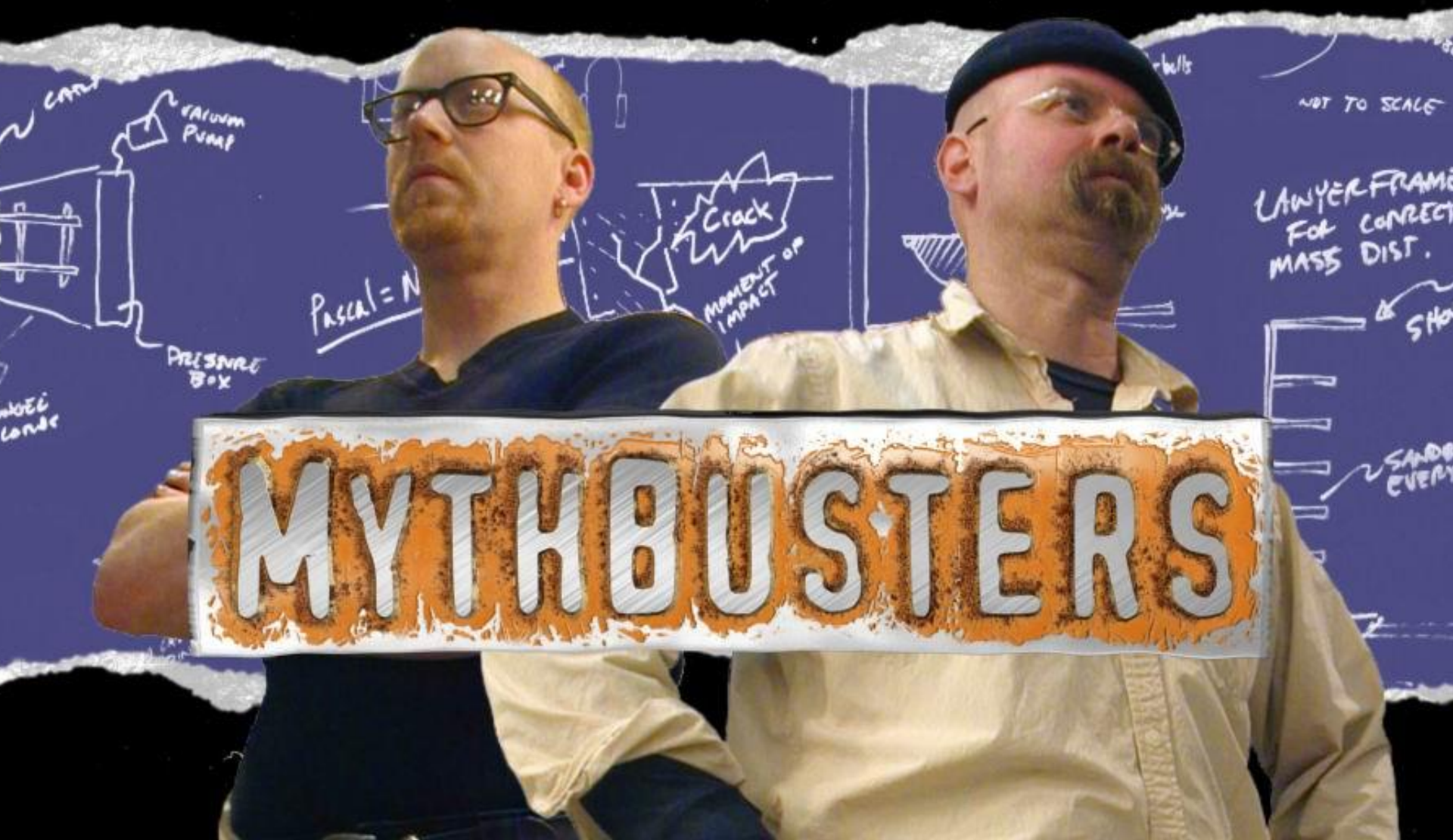


Why the Plan?



Our Watery World

MYTHBUSTERS



$Pascal = N/m^2$

Crack
MOMENT OF IMPACT

NOT TO SCALE

LAWYER FRAME FOR CORRECT MASS DIST.

SAND EVERY

Imperative for change

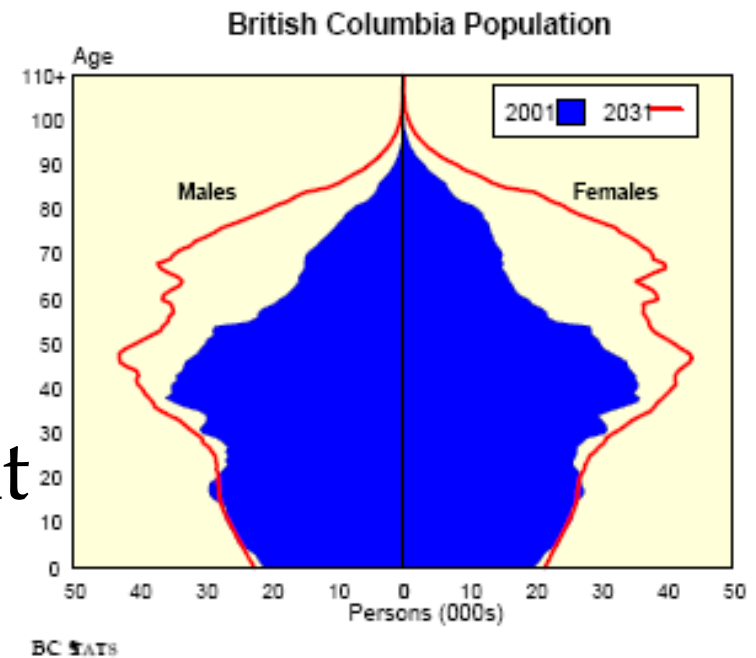


- Climate change means water change!
 - More water supply predicted annually
 - Warmer winters mean less snow, more rain
 - Hotter longer summers
 - More floods, more droughts
- Ecosystem resilience lower in unhealthy streams

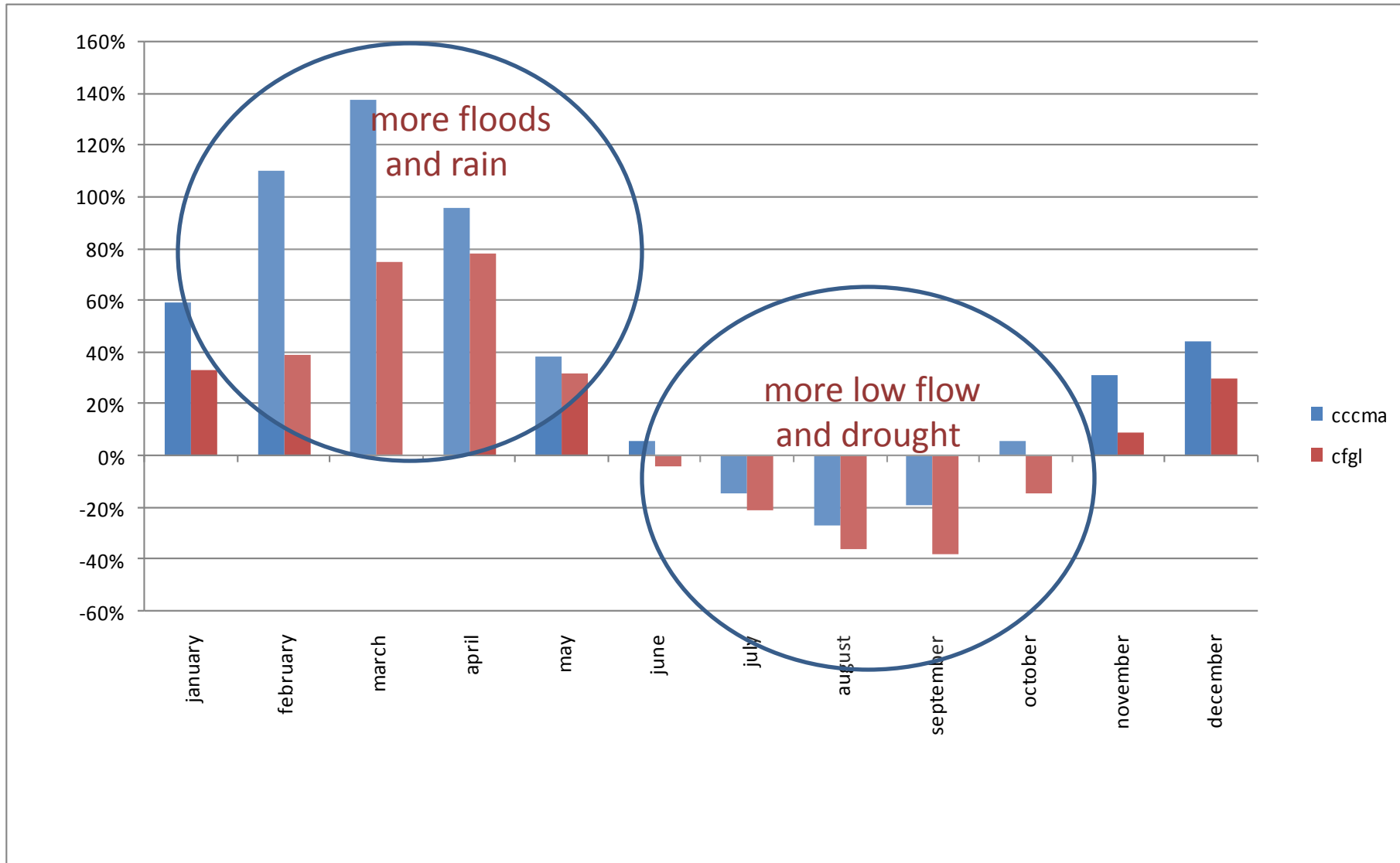
More people, conflict, uncertainty

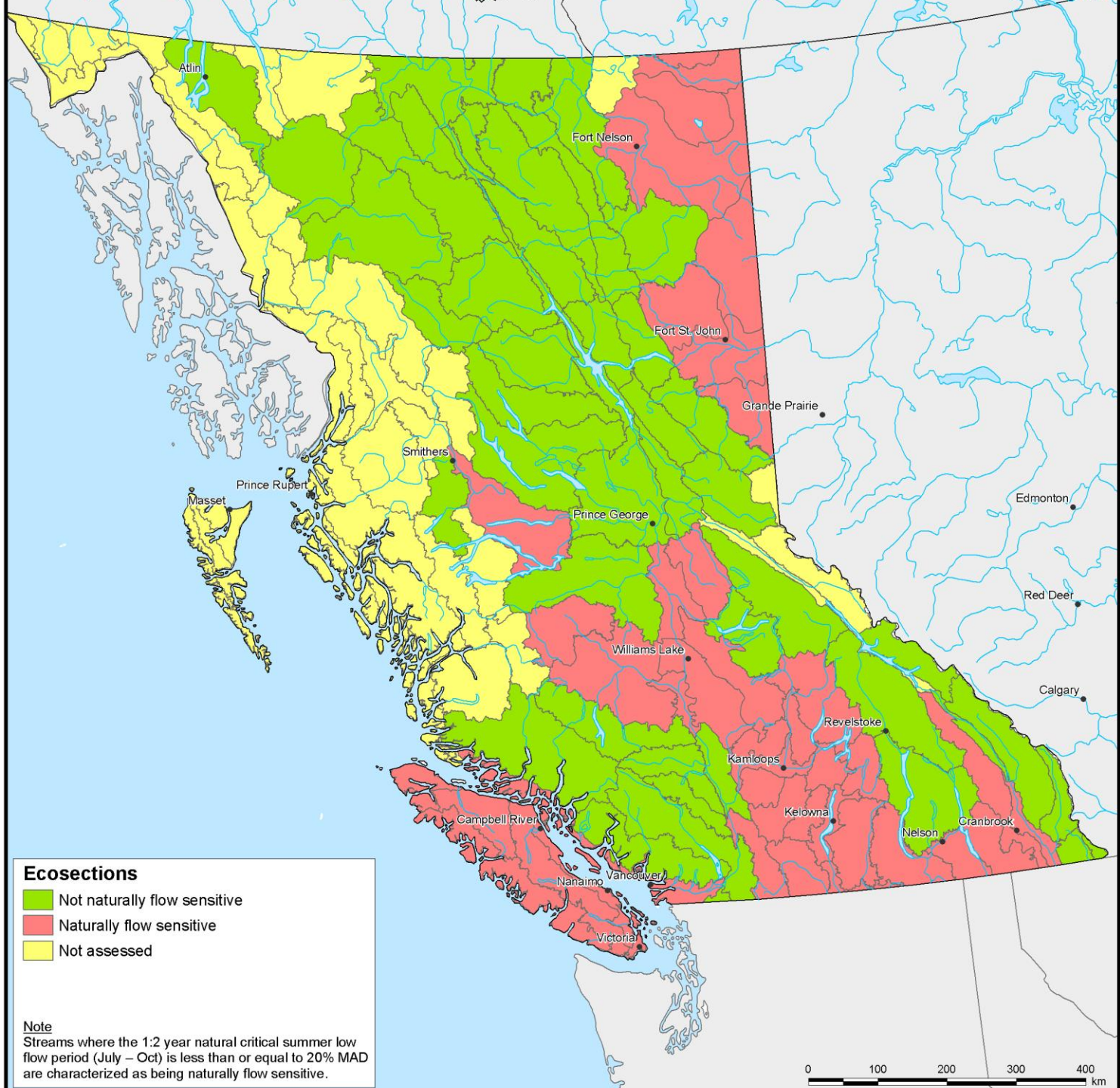
- Between 2009 and 2035 B.C.'s population will increase by 1.4 million. Our median age will increase from 40.7 - 45.4
- BC's water management needs to change for the needs of the future.

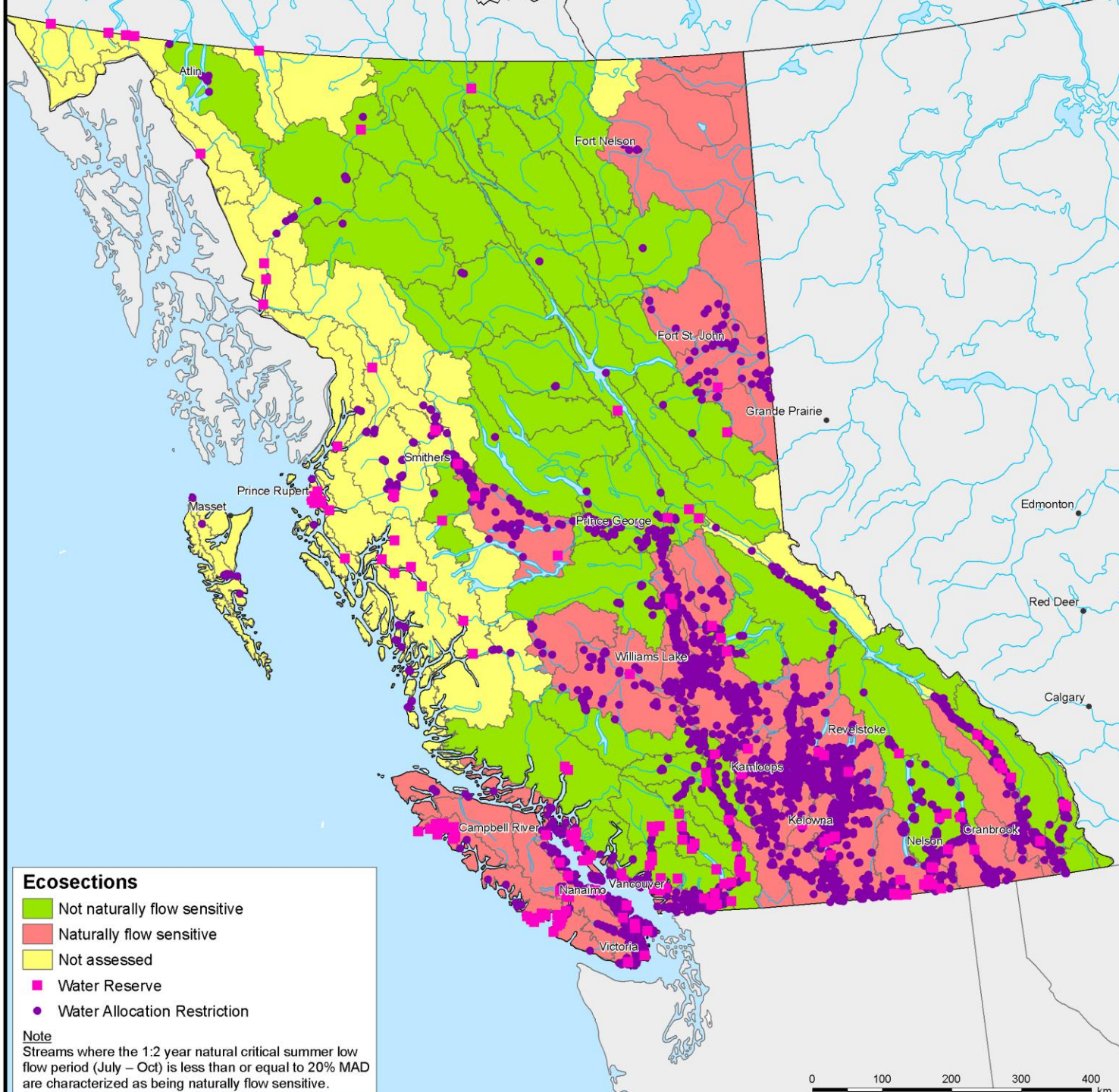
Becoming an older population



Projected Changes Fraser River Flows 2040-2070







Ecosections

- Not naturally flow sensitive
- Naturally flow sensitive
- Not assessed
- Water Reserve
- Water Allocation Restriction

Note

Streams where the 1:2 year natural critical summer low flow period (July – Oct) is less than or equal to 20% MAD are characterized as being naturally flow sensitive.



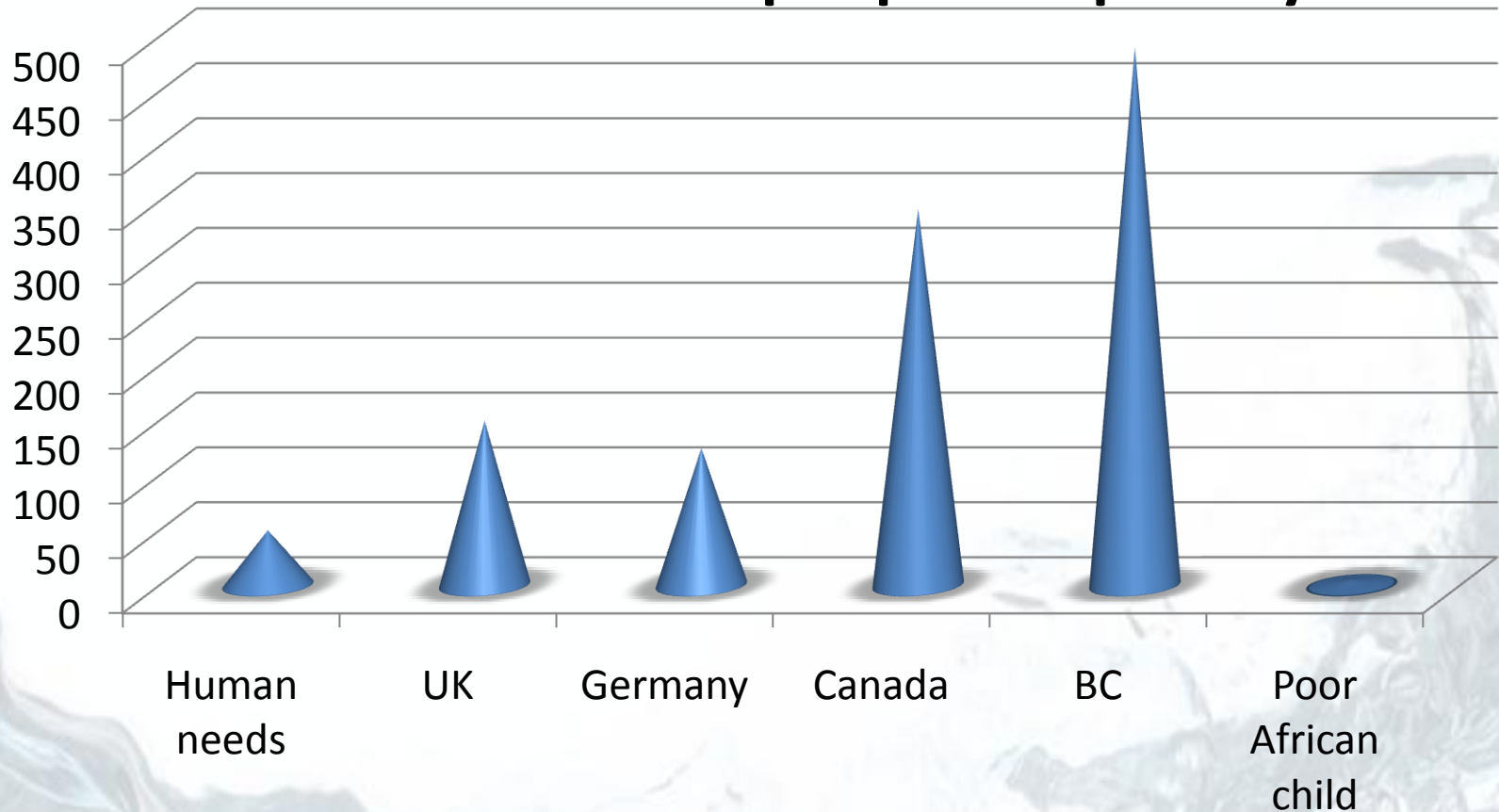
Water is needed for everything!

What is your water footprint?



Water use comparison

Water use litres per person per day



Actions – Demand & Supply

- Strong efficiency targets
 - BC will be 33% more water efficient by 2020
 - 50% of new municipal supply acquired through conservation by 2020
- 2008 allocated water as a baseline
- Many actions and tools to help
- Legislative changes could encourage water efficiency



Actions – Water Act Modernization

- Protect stream health and aquatic environments
- Improve water governance arrangements
- Introducing more efficiency and flexibility for water allocation
- Regulation of ground water use

Actions – Lead Community

- Protect waterways
- Reduce your use
- Home water assessment
- Support change
- Tell others



Actions – Conservation House



By taking steps in and around their homes, British Columbians can reduce their annual water use by approximately 35 per cent and save on energy costs at the same time.



Thanks for being part
of the solution!

livingwatersmart@gov.bc.ca